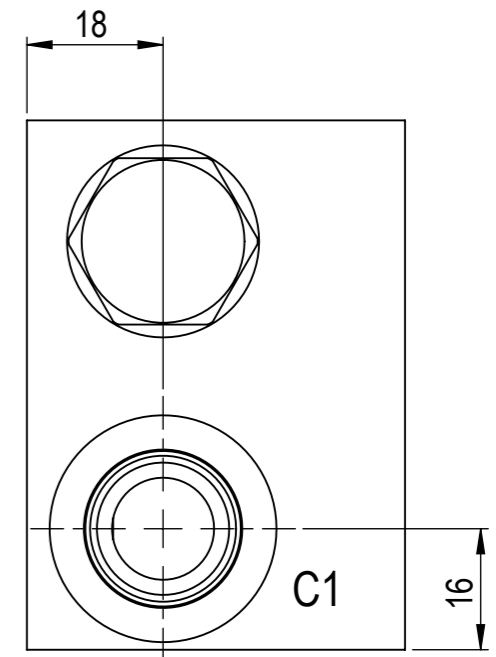
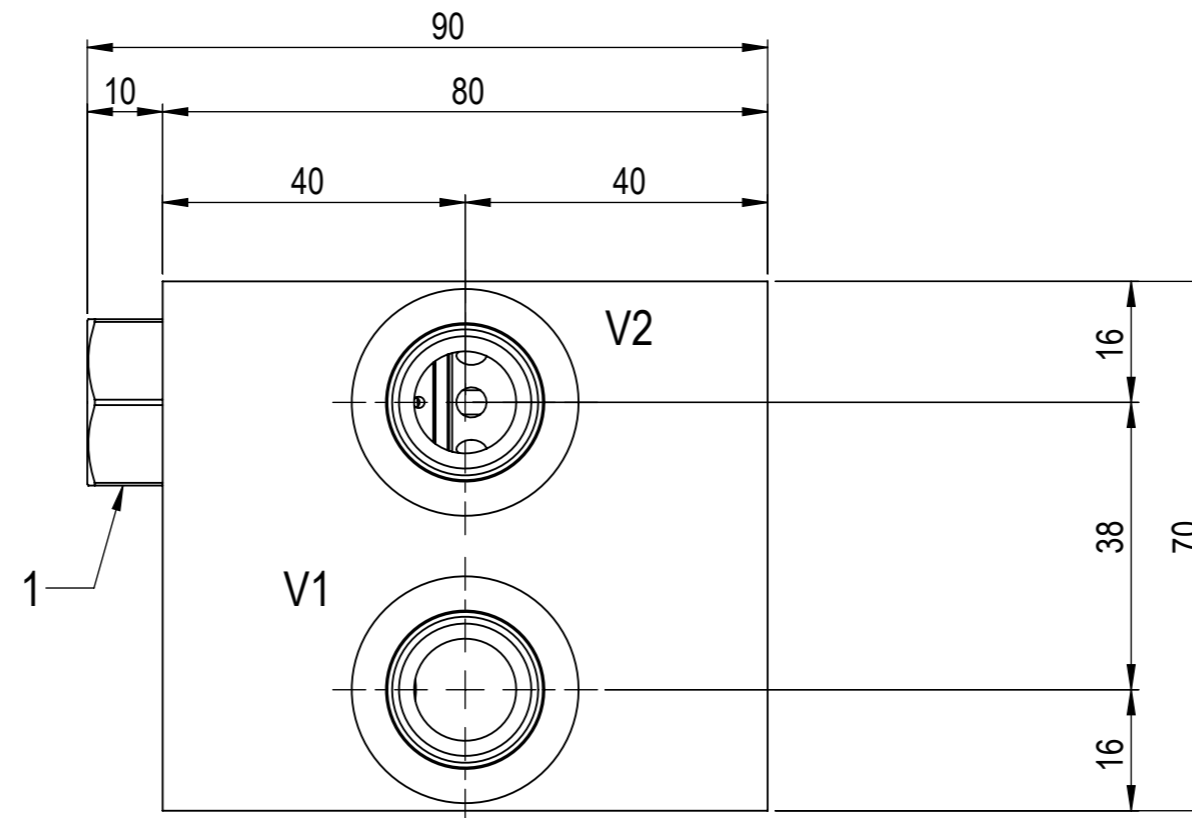
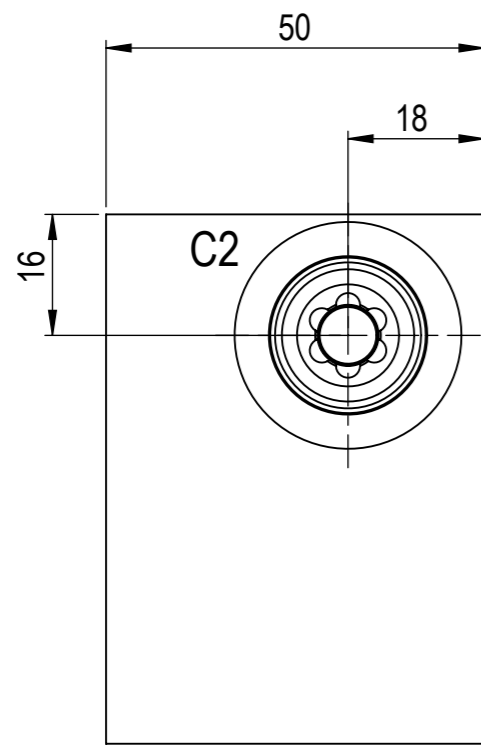


Caratteristiche Tecniche Technical features:		
Portata di lavoro Working flow rate	60 lpm 15 gpm	
Pressione massima Max pressure	210 bar 3045PSI	
Fluido Fluid	Olio minerale Mineral oil	
Viscosità Viscosity	20 - 200 cSt	
Guarnizioni Seals	O-rings	NBR 70 + 90 Sh
	Backup rings	PTFE
Temperatura olio Oil temperature	-20 °C / +80°C	
Contaminazione ammessa Allowed contamination	18/16/13 ISO 4406	
Materiali	Corpo Manifold	Alluminio 2011 Aluminium 2011
Materials	Componenti Components	Acciaio temprato Hardened steel

Attacchi User ports:	
C1, C2, V1, V2	Female port SAE8 (3/4-16 UNF)

Valvole Valves:		
Pos.	Valvola Valve	Note Notes
1	Cartridge pilot operated check valve Type PO11AS	Pressione di apertura Cracking pressure Rapporto di pilotaggio Pilot ratio Pistone con tenuta Piston with seal
		2 bar 3:1 Yes



<p>OLEOWEB Valves and solutions</p> <p>Standard di riferimento per quote non indicate Reference standard for notes not indicated</p> <p>Tolleranze lineari, angolari, radiali, smussi Linear, angular, radial, chamfer tolerances UNI EN 22768/1 CLASSE / class m</p> <p>Tolleranze di forma / Shape tolerances UNI EN 22768/2 CLASSE / class K</p>	Descrizione / Description SINGLE T-11A PILOT OPERATED CHECK VALVE RP 3:1 2 BAR PISTON WITH SEAL ALUM. BODY SAE8 PORTS		
	Nome foglio / Sheet name Overall dimension	Formato / Format A3	Scala / Scale 1:1
	Nome progetto / Project name PRO23026	Disegnato da / Drawn by F. Grasselli	Data disegno / Drawing date 27/06/2023
	Codice prototipo / Prototype code -	Approvato da / Approved by F. Grasselli	Data approvazione / Approvation date 27/06/2023
	Gruppo / Group PO11AS	Codice / Code PO11AS-O23GPSASAS	Indice di revisione / Revision index 01
	Documento riservato a termini di Legge. Vietata la riproduzione e la divulgazione a soggetti terzi se non espressamente autorizzati. Document reserved in accordance with the law. Reproduction and disclosure to third parties is prohibited unless expressly authorized.		

1

2

3

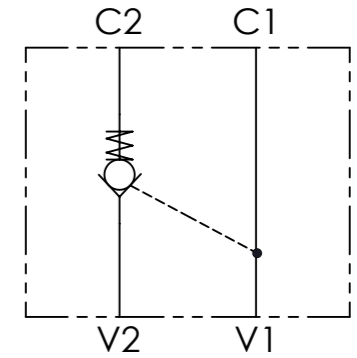
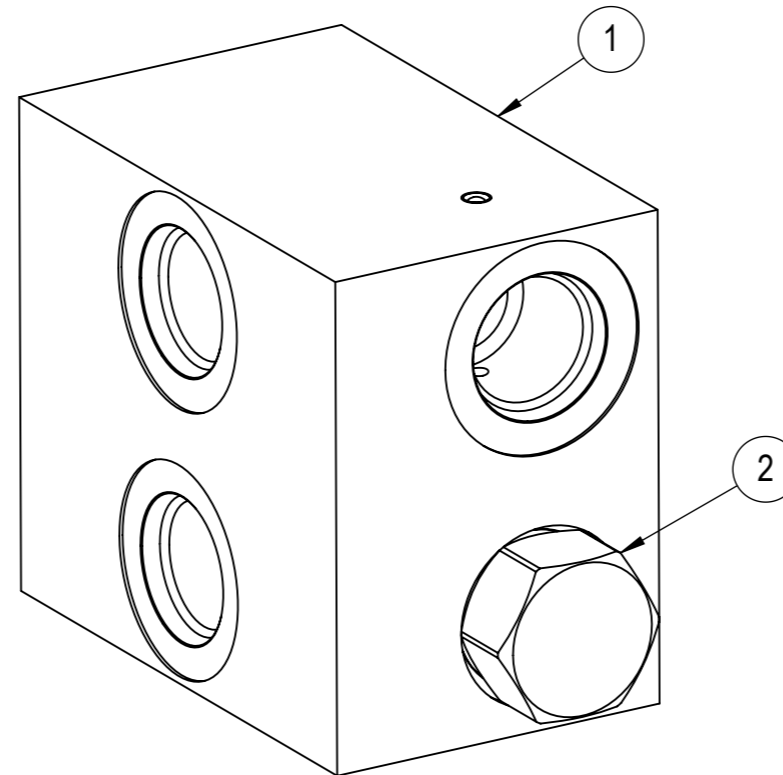
4

5

6

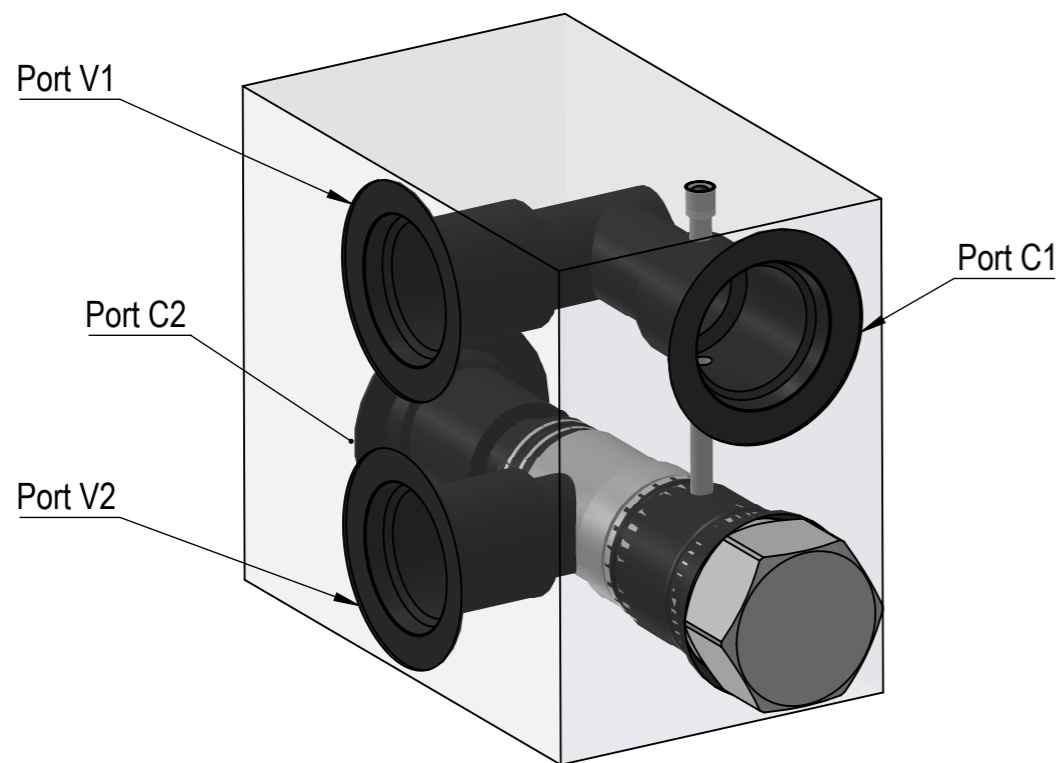
A

A



B

B



C

C

D

D

2	PO11AS-O23GPS	PILOTATED CHECK VALVE 2 bar RP 3:1 CARTRIDGE STYLE (CAVITY T-11A)	1
1	5COR08S08201	PREMONTATO CORPO ALLUMINIO SINGOLA T-11A ATTACCHI SAE08 (TIPO B)	1
Pos.	Codice	Descrizione	Q.tà



OLEWEB
Valves and solutions

Standard di riferimento per quote non indicate
Reference standard for notes not indicated

Tolleranze lineari, angolari, radiali, smussi
Linear, angular, radial, chamfer tolerances
UNI EN 22768/1 CLASSE / class m

Tolleranze di forma / Shape tolerances
UNI EN 22768/2 CLASSE / class K

Descrizione / Description

SINGLE T-11A PILOT OPERATED CHECK VALVE RP 3:1 2 BAR PISTON WITH SEAL ALUM. BODY SAE8 PORTS

Nome foglio / Sheet name

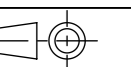
PRD

Formato / Format

A3

Scala / Scale

2:1



Nome progetto / Project name

PRO23026

Disegnato da / Drawn by

F. Grasselli

Data disegno / Drawing date

27/06/2023

Codice prototipo / Prototype code

-

Approvato da / Approved by

F. Grasselli

Data approvazione / Approvation date

27/06/2023

Gruppo / Group

PO11AS

Codice / Code

PO11AS-O23GPSASAS

Indice di revisione / Revision index

01

Documento riservato a termini di Legge. Vietata la riproduzione e la divulgazione a soggetti terzi se non espressamente autorizzati.
Document reserved in accordance with the law. Reproduction and disclosure to third parties is prohibited unless expressly authorized.

1

2

3

4

5

6