

HNC11/20/M90/10

Mobile Fluid Transfer unit with Optional ICM 2.0 (in-line Contamination Monitor)



- Easy to use and easy maintenance
- Integrated on/off rocker switch
- Continue Operation
- High flow



Optional Inline Contamination Monitor



Integrated Clogging indicators

HNC1 1/20/M90/10

Specifications

| | |
|----------------|---------------------------------------|
| Inlet Filter | 90µm nominal - 5psi bypass |
| Outlet Filter | 10µm nominal - 25psi bypass |
| Electric Motor | 1.1kw 1440rpm 240Vac |
| Gear Pump | Vivoil 16.8cc Group 2 |
| Output Flow | 24 lpm |
| Inlet Hose | 1.1/4" diameter, 2.2 meters in length |
| Outlet Hose | 1" diameter, 2.2 meters in length |



- Filtration cart configuration has been based on usage with 46 grade hydraulic oil at minimum ambient temperature of 20°C.
- Operation outside these parameters could result in filtration system bypass.
- For special applications please contact us for custom configuration options.



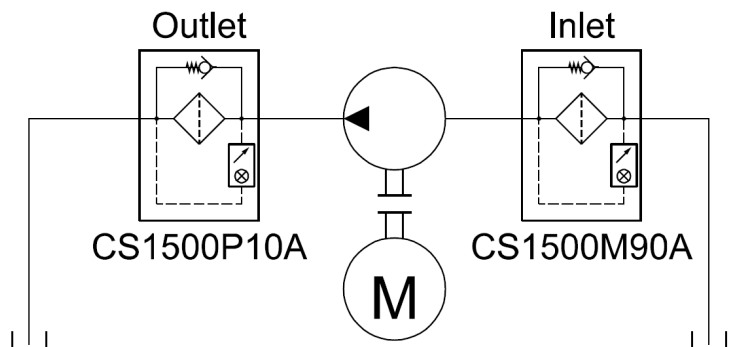
Inlet Filter

Outlet Filter

CS1500M90A

CS1500P10A

Replacement Filter Elements



System Schematic