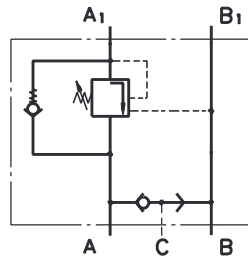


VALVES FOR HYDRAULIC MOTORS

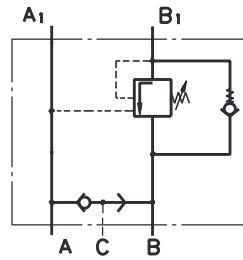
CONTENTS

Valves for MP, MR and MH type KPBR ...	52	Crossover Relief Valves	61
Valves for MS type KPBS	53	Valves for MP, MR and MH type KP...R	62
Valves for MT type KPBT	54	Valves for MS type KP...S	62
Valves for MV type KPBV	55	Valves for MT type KP...T	63
Valves for RW and HW type KPBW	56	Valves for MV type KP...V	64
Valves for HP and HR type KPBHR...E ...	57	Valves for RW and HW type KP...W	67
Valves for HP and HR type KPBHR...D ...	58	Valves for HR and RK type KPDHR and KPDRK ...	69
Switch valves type KPWR and KPWS ...	59	Order Code	70÷71
Switch valves type KPWT and KPWW	60		

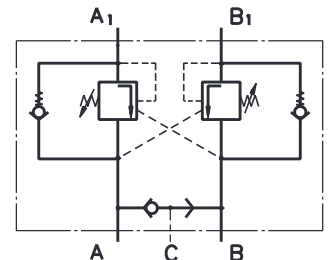
OVERCENTER VALVES with BRAKE CONTROL



Single Overcenter Valves with Brake Control type KPBR ... AE



Single Overcenter Valves with Brake Control type KPBR ... BE



Dual Overcenter Valves with Brake Control type KPBR ... D

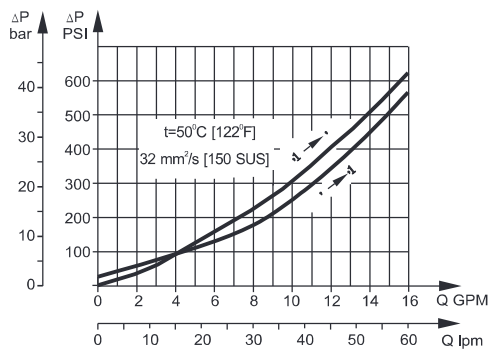
SPECIFICATION DATA

Parameters	Type											
	KPBR...E	KPBS...E	KPBR...D	KPBS...D	KPBW...E	KPBW...D	KPBHR...E	KPBHR...D	KPBT...E	KPBT...D	KPBV...E	KPBV...D
Flow Rate, lpm [GPM]	60 [15.85]						100 [26.4]		200 [52.8]			
Rated Pressure*, bar [PSI]	60÷280 [870÷4060]						70÷250 [1015÷3625]					
Pilot Ratio	4,25:1											
Weight, kg [lb]	3,020 [6.658]	2,900 [6.39]	3,060 [6.746]	2,920 [6.437]	3,050 [7.724]	3,140 [6.923]	2,300 [5.071]	2,400 [5.291]	5,400 [11.905]	5,800 [12.787]	9,200 [20.283]	9,750 [21.495]

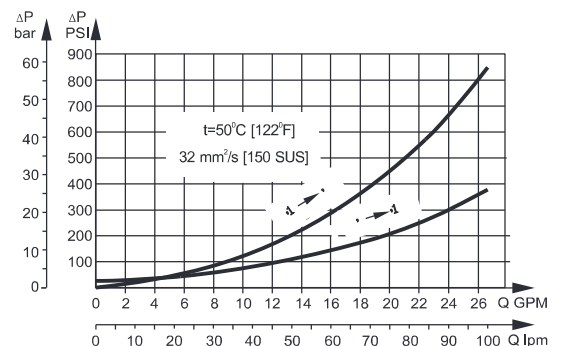
*Pressure Settings are at flow rate of 5 lpm [1.3 GPM] and viscosity 32 mm²/s [150 SUS] at 50 °C [122 °F].

PRESSURE LOSSES

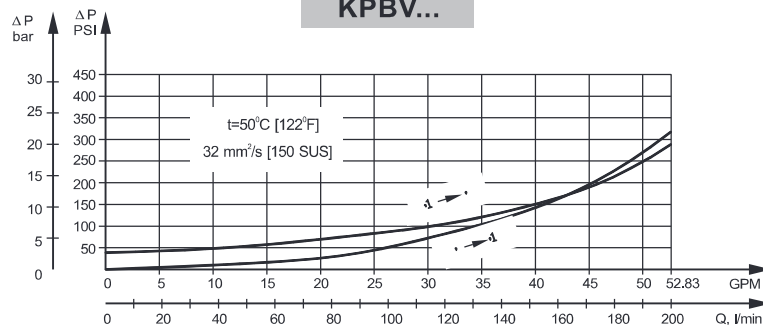
KPBR..., KPBS..., KPBW..., KPBHR...



KPBT...

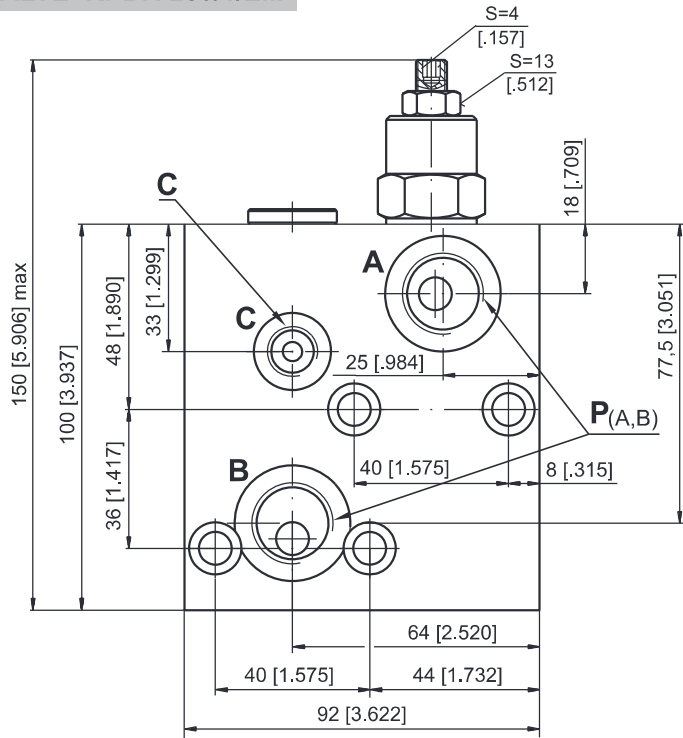
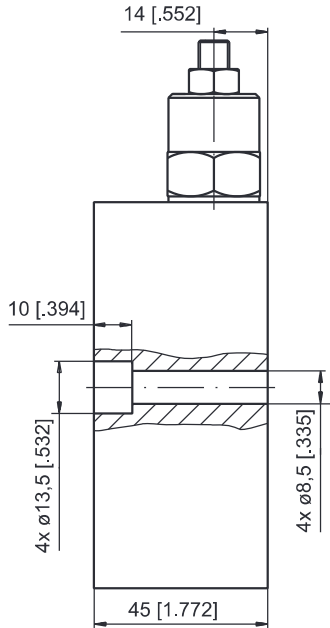


KPBV...

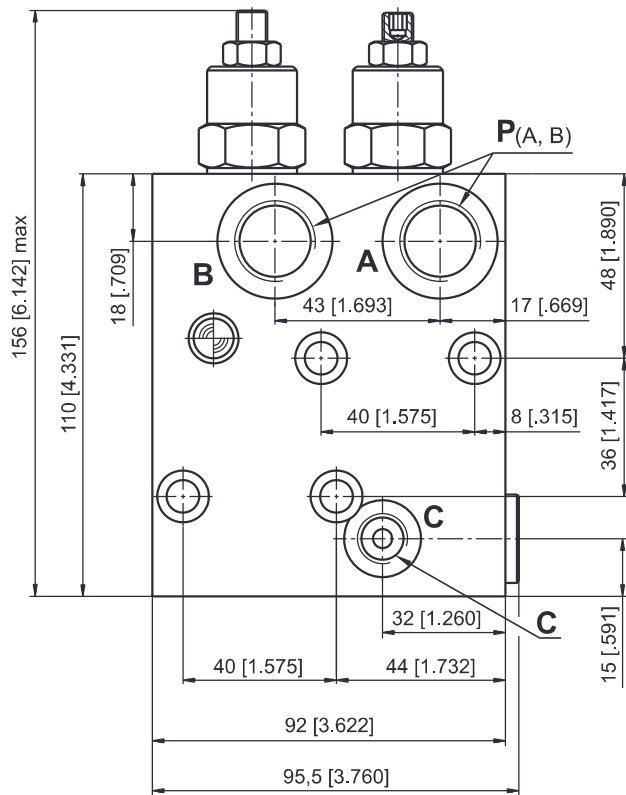
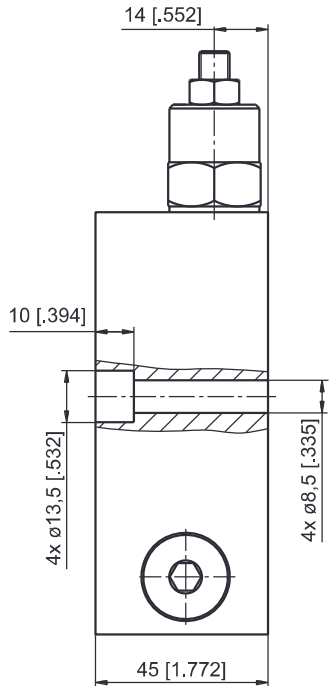


VALVES for MP, MR and MH HYDRAULIC MOTORS

SINGLE VALVE KPBR-250/1/E...



DUAL VALVE KPBR-250/1/D...



	Thread Ports - P _(A,B)	Thread Port - C
-	G1/2 16 [.63] depth	G1/4 12 [.47] depth
M	M22x1,5 16 [.63] depth	M14x1,5 12 [.47] depth
A	7/8 - 14 UNF O-ring 16 [.63] depth	7/16 - 20 UNF O-ring 12,7 [.50] depth

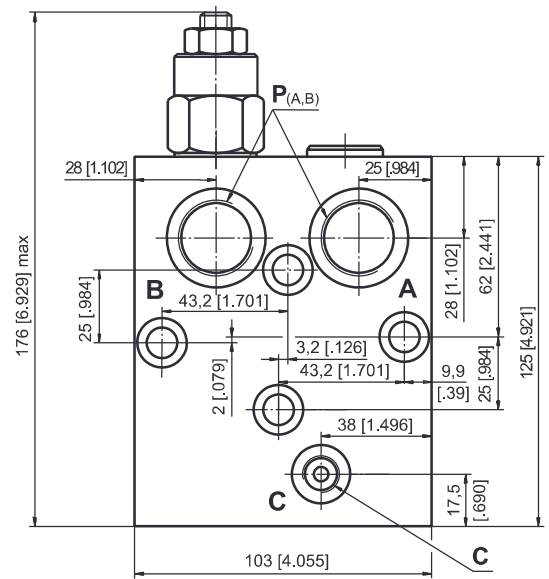
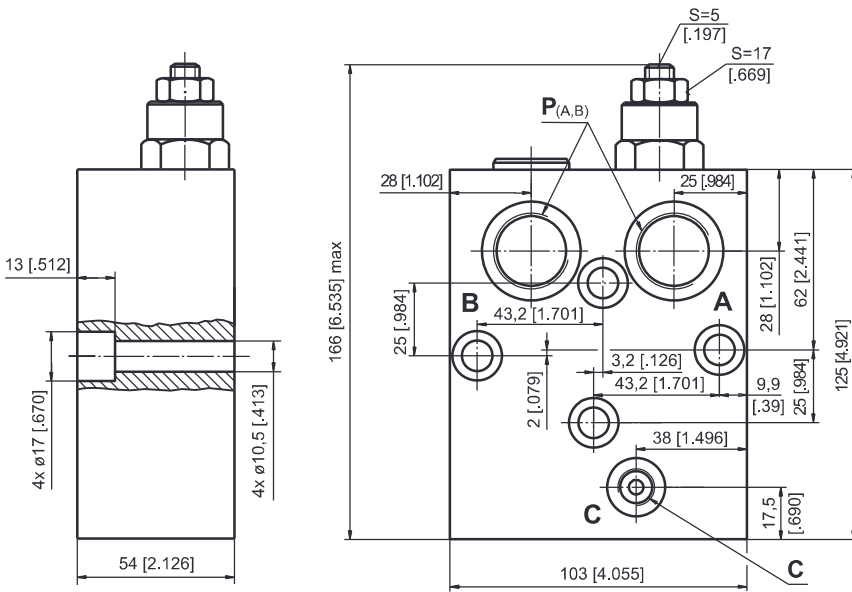


Note : KPBR Blocks are installed directly on MP, MR and MH Motors with four screws M8x45 - 8.8 DIN 912 or 5/16-18 UNC, 1.75 long ANSI B 18.3 . Tightening torque 2,0^{+0,5} daNm [177⁺⁴⁴ lb-in].

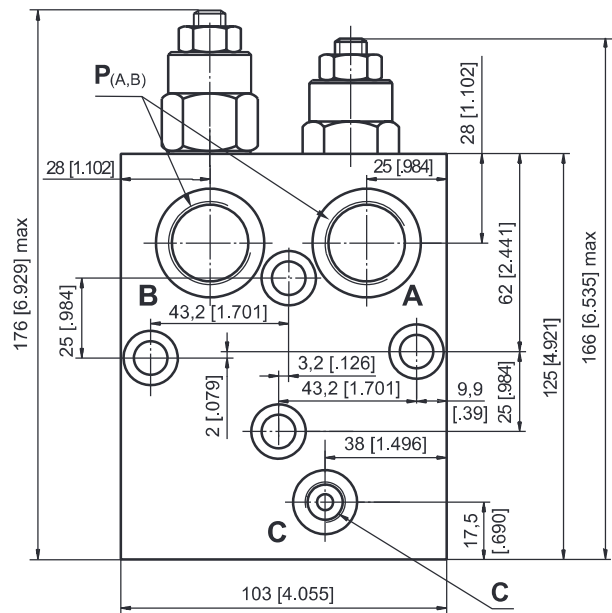
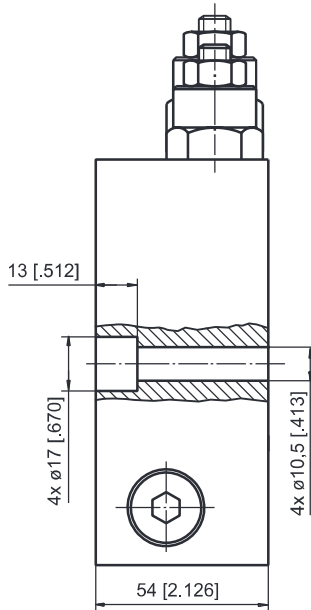
VALVES for MT HYDRAULIC MOTORS

SINGLE VALVE KPBT-250/1/AE...

SINGLE VALVE KPBT-250/1/BE...



DUAL VALVE KPBT-250/1/D...



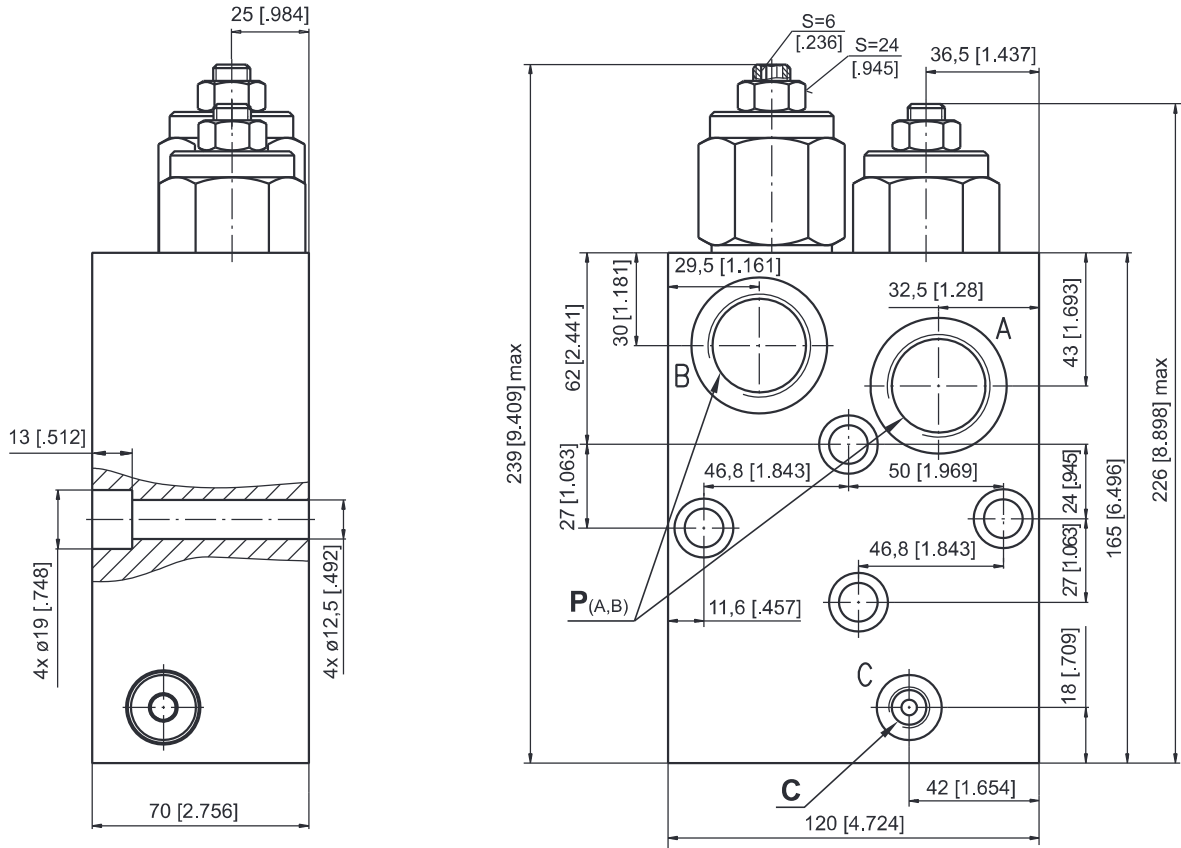
	Thread Ports - P _(A,B)	Thread Port - C
-	G3/4 17 [.67] depth	G1/4 14 [.55] depth
M	M27x2 17 [.67] depth	M14x1,5 14 [.55] depth
A	1 1/16-12 UN O-ring 17 [.67] depth	7/16 - 20 UNF O-ring 12,7 [.50] depth



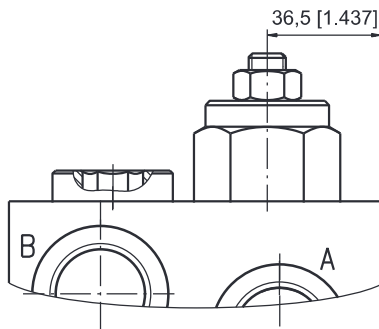
Note : KPBT Blocks are installed directly on MT Motors with four screws M10x50 - 8.8 DIN 912. Tightening torque 3,5 daNm [310 lb-in].

VALVES for MV HYDRAULIC MOTORS

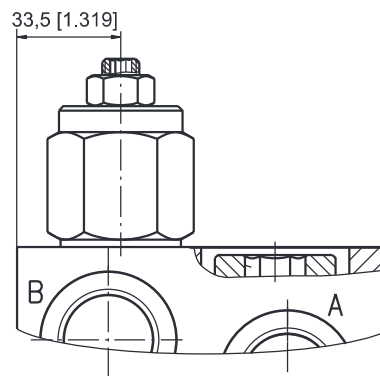
DUAL VALVE KPBV-250/1/D...



SINGLE VALVE KPBV-250/1/AE...



SINGLE VALVE KPBV-250/1/BE...



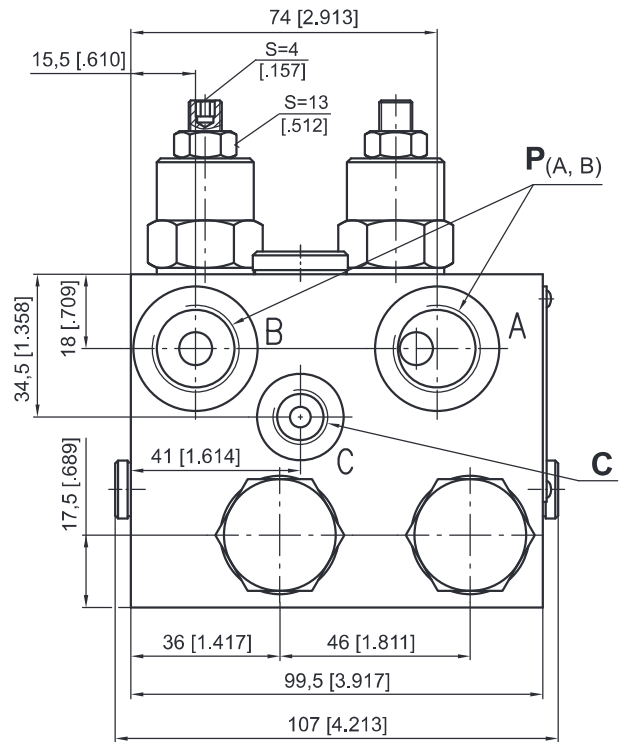
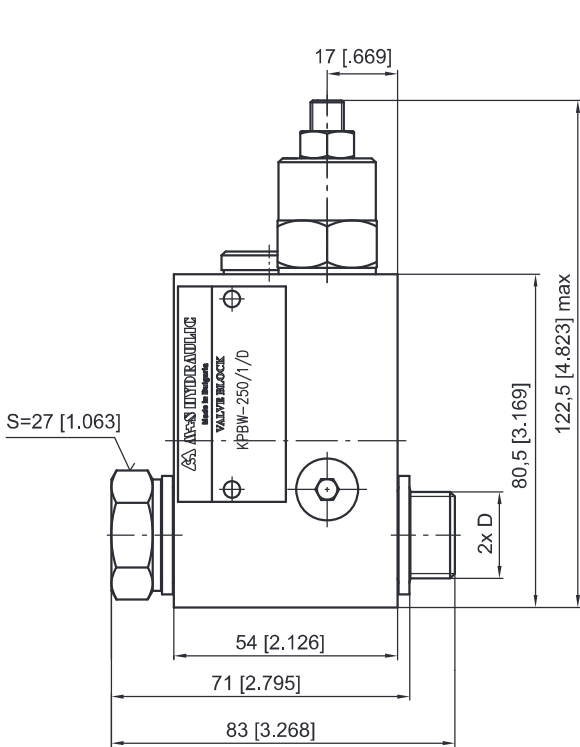
	Thread Ports - P _(A,B)	Thread Port - C
-	G 1 20 [.79] depth	G1/4 14 [.55] depth
M	M33x2 20 [.79] depth	M14x1,5 14 [.55] depth
A	1 5/16 - 12 UN O-ring 20 [.79] depth	7/16 - 20 UNF O-ring 12,7 [.50] depth



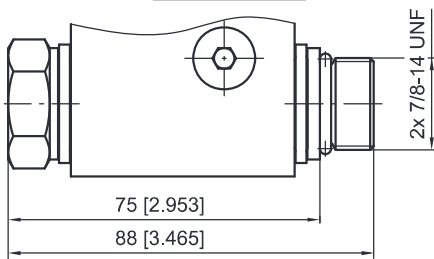
Note : KPBV Blocks are installed directly on MV Motors with four screws M12x70 - 8.8 DIN 912. Tightening torque 6,5 daNm [575 lb-in].

VALVES for RW and HW HYDRAULIC MOTORS

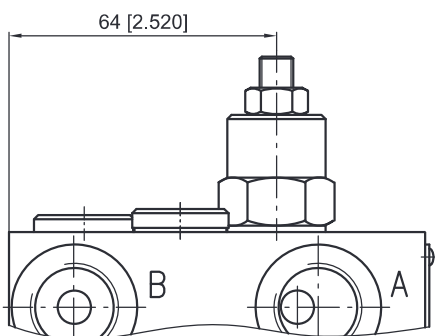
DUAL VALVE KPBW-250/1/D...



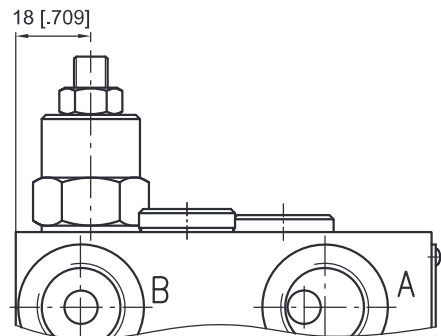
KPBW-...A



SINGLE VALVE KPBW-250/1/AE...



SINGLE VALVE KPBW-250/1/BE...



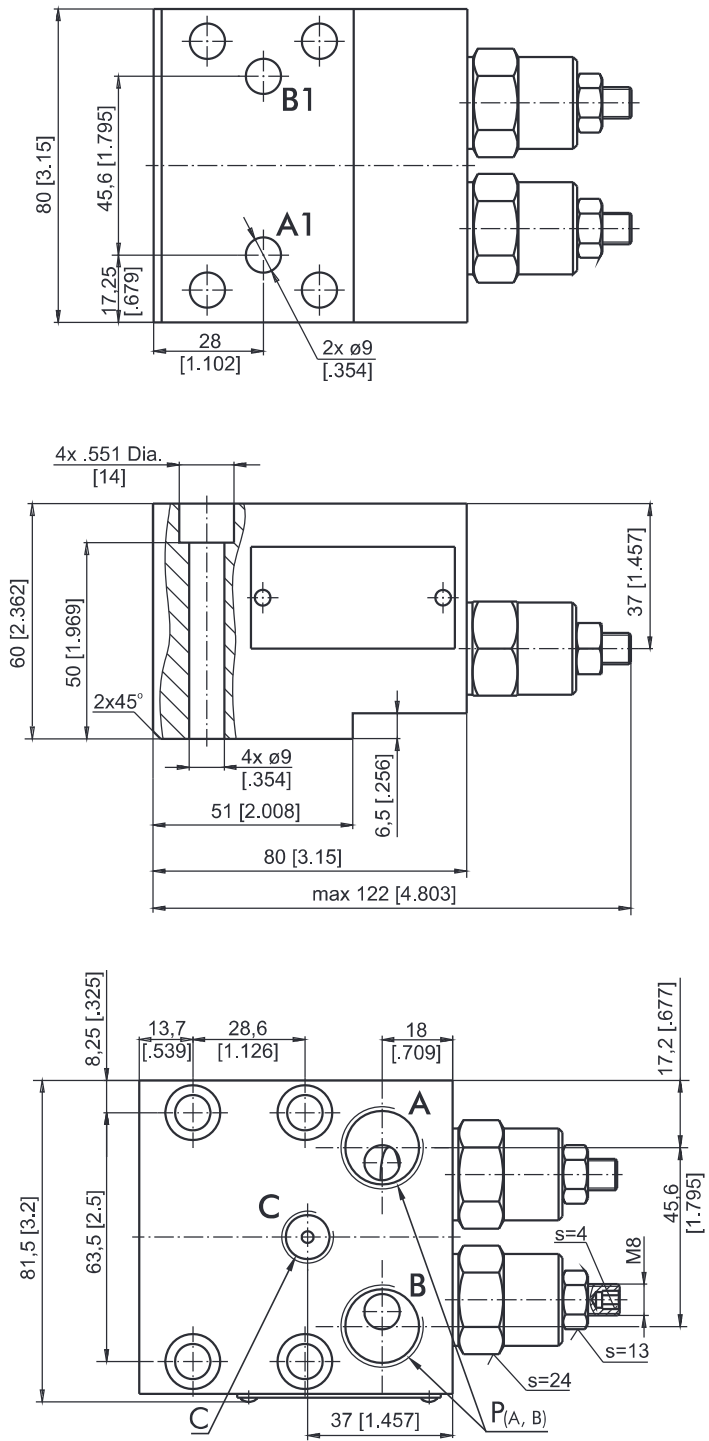
	Thread Ports - P _(A,B)	Thread Port - C	Thread Ports - D
-	G1/2 16 [.63] depth	G1/4 12 [.47] depth	G1/2 12 [.47] length
M	M22x1,5 16 [.63] depth	M14x1,5 12 [.47] depth	M22x1,5 12 [.47] length
A	7/8 - 14 UNF O-ring 16 [.63] depth	7/16 - 20 UNF O-ring 12,7 [.50] depth	7/8 - 14 UNF O-ring 13 [.51] length



Note : KPBW Blocks assembly to RW or HW motors is done with two screws (thread D) included in the valve set. Tightening torque 8 daNm [710 lb-in].

VALVES for HP and HR HYDRAULIC MOTORS

DUAL VALVE KPBHR-250/1/D...



	Thread Ports - P _(A,B)	Thread Ports - C
A	7/8 - 14 UNF O-ring 17 [.67] deep	7/16 - 20 UNF O-ring 12.7 [.50] deep
-	G1/2 17 [.67] deep	G1/4 14 [.55] deep
M	M22x1,5 17 [.67] deep	M14x1,5 14 [.55] deep



Note : KPBHR Blocks are installed directly on HP and HR Motors with four bolts 5/16-18UNC, 2.5 long or M8x60 - 8.8 DIN 912. Tightening torque 2,0^{+0.5} daNm [177⁺⁴⁴ lb-in].