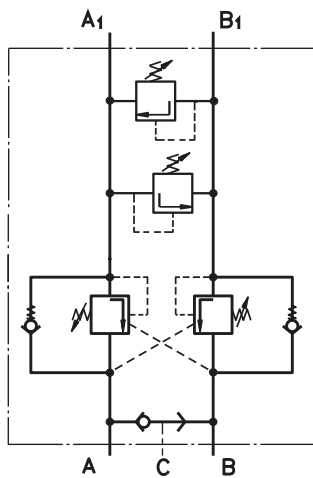


KPDBR210-250/1/D

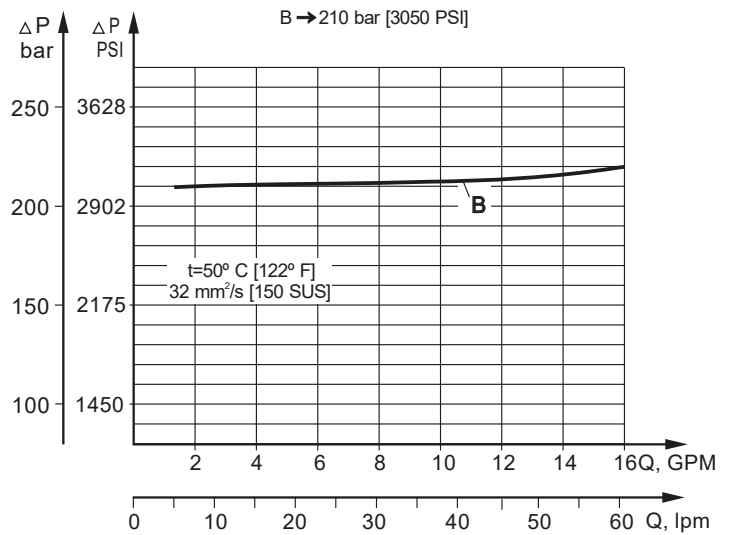
INTRODUCTION

"M+S Hydraulic" introduces a new valve, which contains two relief valves and two overcentre valves with shuttle valve, flangeable on **MP, MH and MR** motors. Usually flanged on winch driving brake motors with pressure released brake, to control load lowering and avoid unwanted acceleration.



Double-acting Overcenter Valves with Brake Control type KPDBR...

Rated Pressure

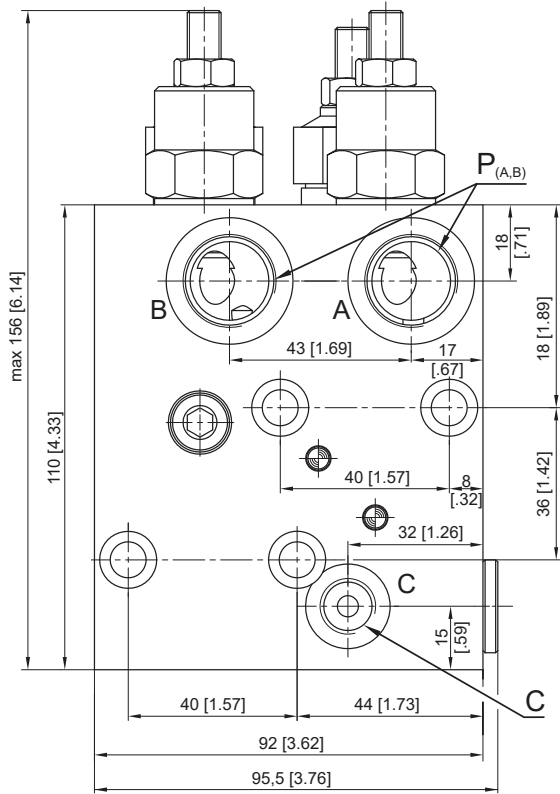


SPECIFICATION DATA

Parameters	Type
	KPDBR.....
Flow Rate, l/min [GPM]	60 [15.85]
Rated Pressure	80 ÷ 210
Relief Valve*, bar [PSI]	[435 ÷ 1450]
Rated Pressure	80 ÷ 250
Overcenter*, bar [PSI]	[1160 ÷ 3625]
Pilot Ratio	4,25:1
Weight, kg [lb]	5,200 [11.46]

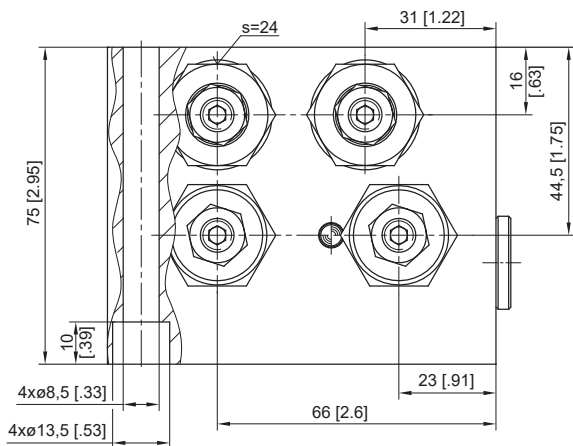
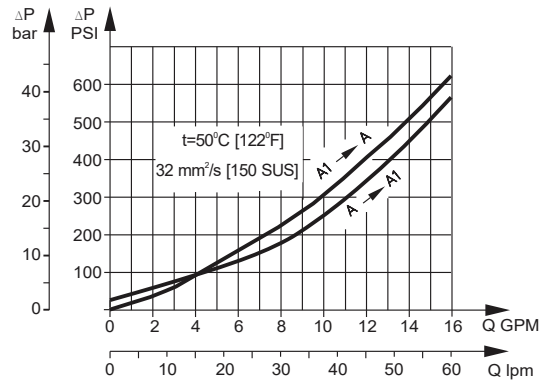
*Pressure Settings are at flow rate of 5 lpm and viscosity 32 mm²/s (50°C).

VALVES FOR MP, MR, MH SERIES MOTORS



	Thread Ports - P _(A,B)	Thread Ports - C
-	G1/2 16 [.63] deep	G1/4 12 [.47] deep
M	M22x1,5 16 [.63] deep	M14x1,5 12 [.47] deep
A	7/8 - 14 UNF O-ring, 16 [.63] deep	7/16 - 20 UNF O-ring, 12 [.47] deep

PRESSURE LOSSES



Note : KPDBR... Blocks are installed directly on MP, MH and MR Motors with four bolts M8x75 - 8.8 DIN912.
Tightening torque $1,7^{+0,2}$ daNm [150^{+18} lb-in].