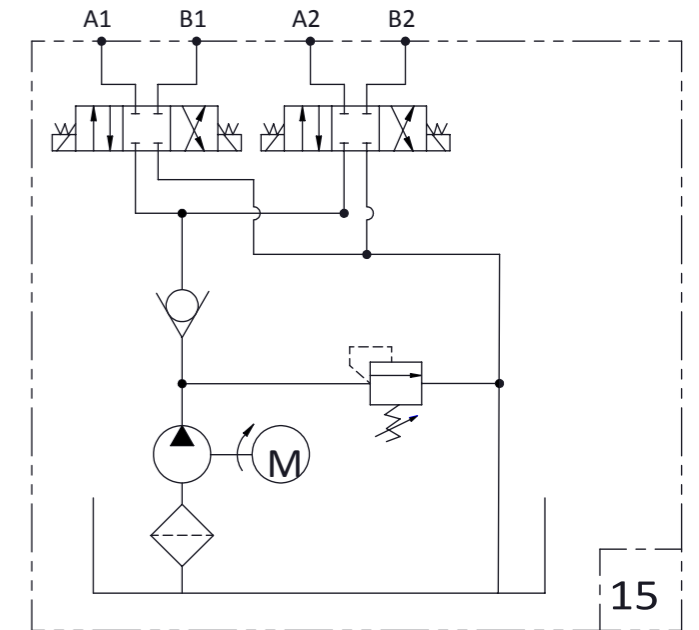
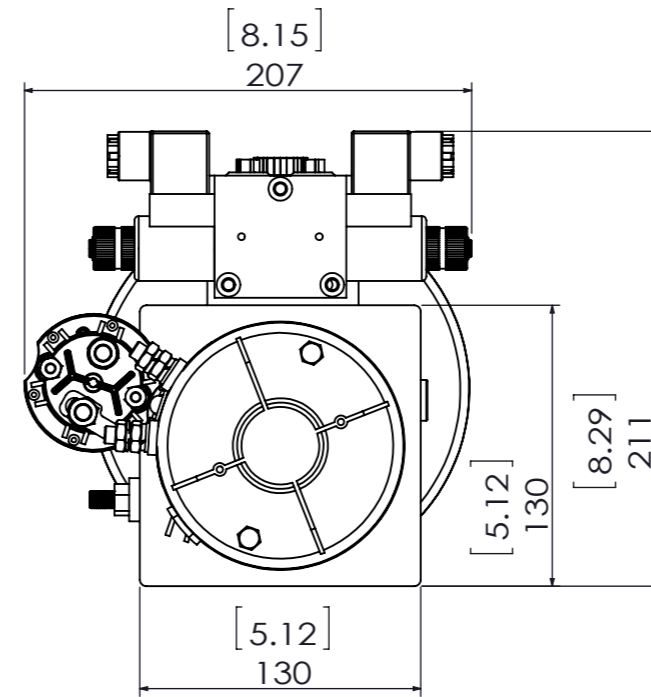
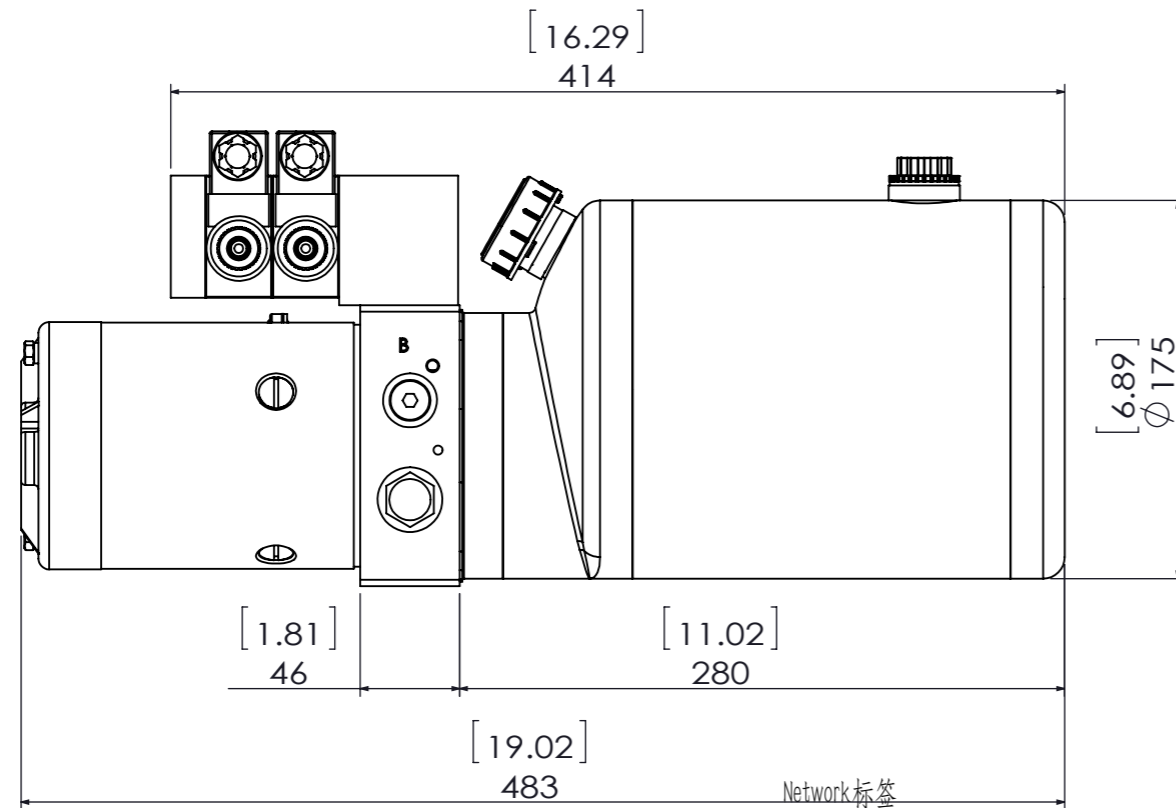


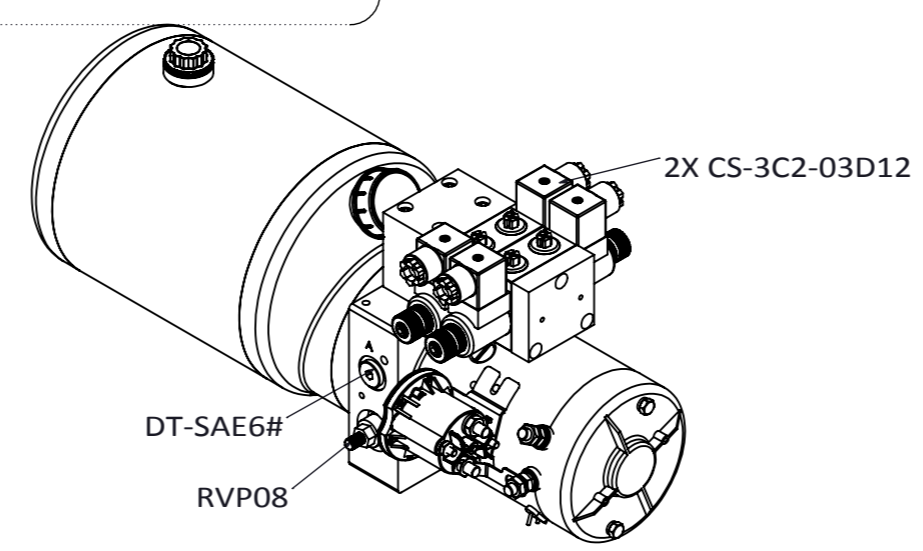
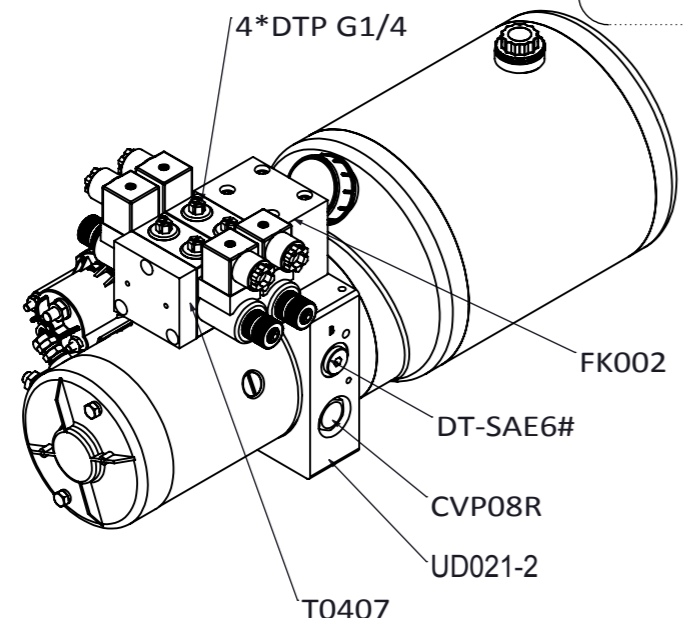
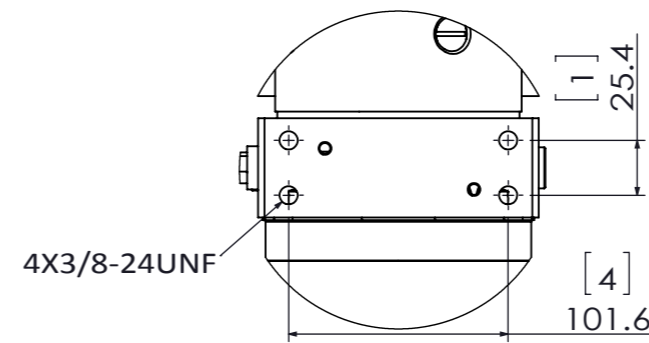
THIS DRAWING IS BEING SUBMITTED FOR YOUR APPROVAL OF THIS DESIGN ON YOUR APPLICATION AND REQUIREMENTS.
A SIGNATURE IS REQUIRED BEFORE AN ORDER CAN BE PROCESSED.

APPROVED BY _____ APPROVAL DATE ____/____/____

REV	DESCRIPTION	DATE	SIGNATURE	CHECKED
XXX	XXX	00/00/00	XXX	XXX
XXX	XXX	00/00/00	XXX	XXX
XXX	XXX	00/00/00	XXX	XXX



MODEL	16DA132ZH211A SV		
Relief Valve Setting	2200PSI		
Motor(KW)	1.6KW	Voltage	12V
Pump Disp	2.1ML	Flow	5.2LPM
Tank Usable	3.8 Litres		



TOLERANCE :mm

> 0	±0.1
> 6	±0.2
> 30	±0.3
> 120	±1
> 315	±2
> 1000	±5



SPECIFICATIONS		
ELECTRICAL MOTOR	416A-2P-M,DC12V,1.6KW	
FLOW RATE	1.4GPM@1500PSI	
MAX. PRESSURE	3000PSI	
RELIEF SETTING	2200PSI	
GEAR PUMP DISP.	G210T 2.1mL/REV	
RESERVOIR	LS1A[B],STEEL, 1.0GAL	
REMOTE CONTROL	N/A	
MOUNTING	HORIZONTAL OR VERTICAL	
PORTING	A/B 1/4BSPP	
DESIGNED_BY	APPROVAL_BY	APPROVAL DATE.
KMC	***	2018/12/14
UNIT:[inch]mm	REFER TO	
CUSTOMER	FILE NAME	SCALE
16DA132ZH211A SV	*	1:3

HYDRAULIC POWER UNIT		
DP13H1502-416A-LS1-01	REVISION A	PAGES 1/4