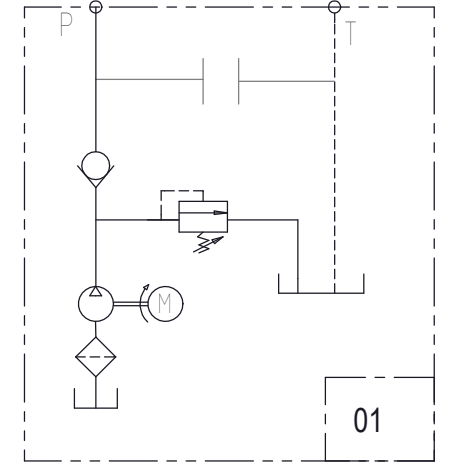
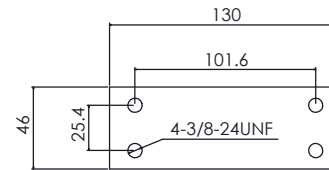
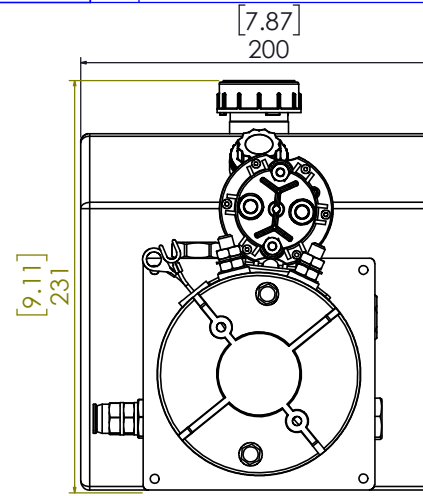
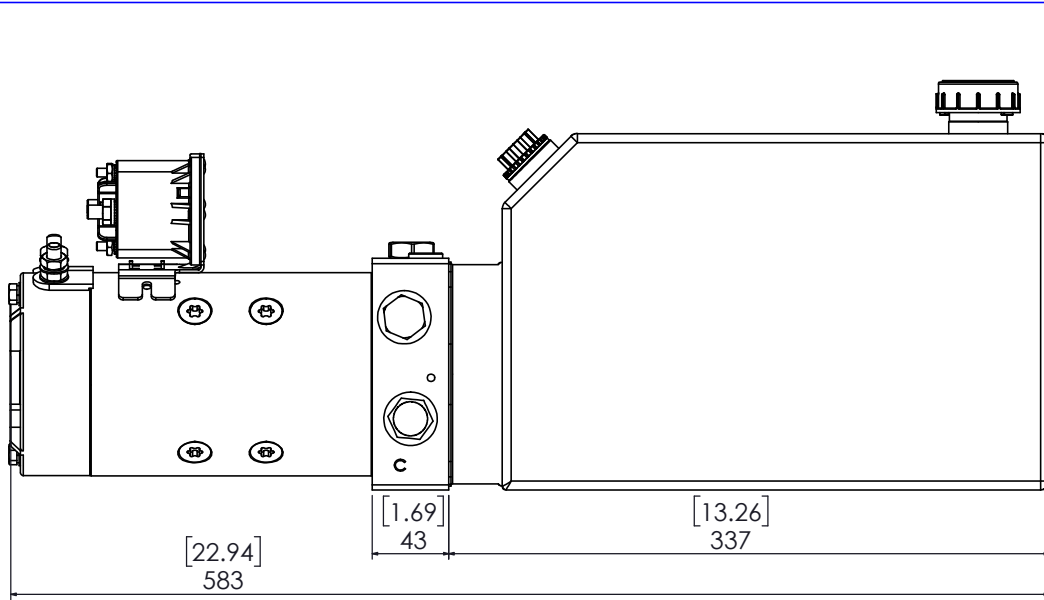


THIS DRAWING IS BEING SUBMITTED FOR YOUR APPROVAL OF THIS DESIGN ON YOUR APPLICATION AND REQUIREMENTS.  
A SIGNATURE IS REQUIRED BEFORE AN ORDER CAN BE PROCESSED.

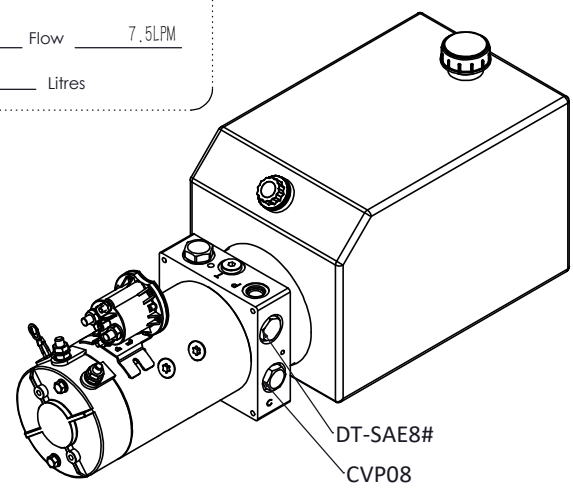
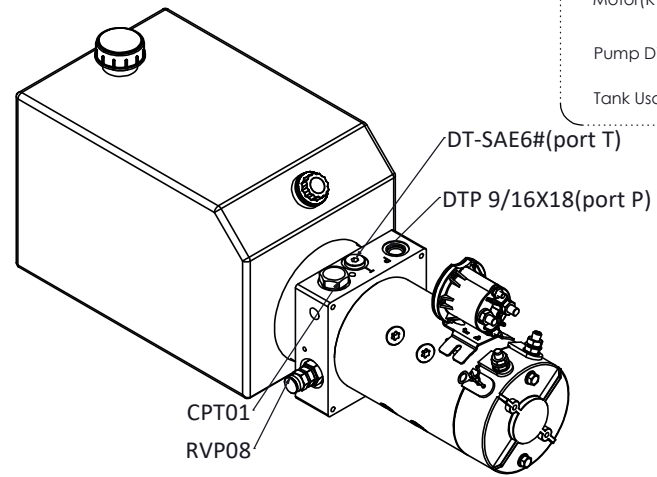
APPROVED BY \_\_\_\_\_ APPROVAL DATE \_\_\_\_/\_\_\_\_/\_\_\_\_

REV	DESCRIPTION	DATE	SIGNATURE	CHECKED
XXX XXX		00/00/00	XXX	XXX
XXX XXX		00/00/00	XXX	XXX
XXX XXX		00/00/00	XXX	XXX



Mocen 标签

MODEL	25DB010H323B
Relief Valve Setting	2500PSI
Motor(KW)	2.8KW
Voltage	24v
Pump Disp	3.2ML
Flow	7.5LPM
Tank Usable	10
	Litres



TOLERANCE :mm

> 0	±0.1
> 6	±0.2
> 30	±0.3
> 120	±1
> 315	±2
> 1000	±5



SPECIFICATIONS	
ELECTRICAL MOTOR	DC24V,2.8KW
FLOW RATE	3LPM@100Bar
MAX. PRESSURE	3200PSI
RELIEF SETTING	2500PSI
GEAR PUMP DISP.	G320 3.2mL/REV
RESERVOIR	MT3 STEEL 10L
REMOTE CONTROL	N/A
MOUNTING	VERTICAL OR HORIZONTAL
PORTING	SAE6#

DESIGNED BY KMC	APPROVAL BY ***	APPROVAL DATE 2022/5/30
--------------------	--------------------	----------------------------

UNIT:[inch]mm REFER TO

CUSTOMER 25DB010H323B	Material number *	SCALE
--------------------------	----------------------	-------

HYDRAULIC POWER UNIT

DP13M01-428B-MT3-02	REVISION A	PAGES 1 / 1
---------------------	---------------	----------------