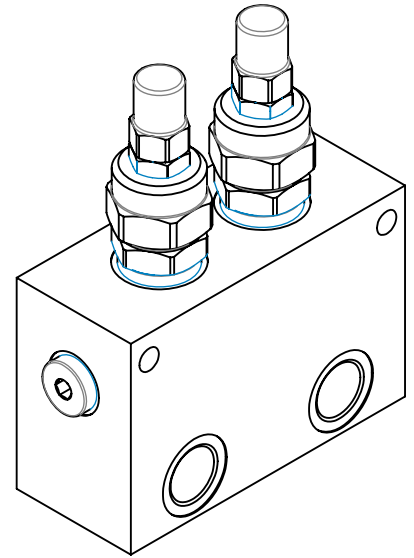
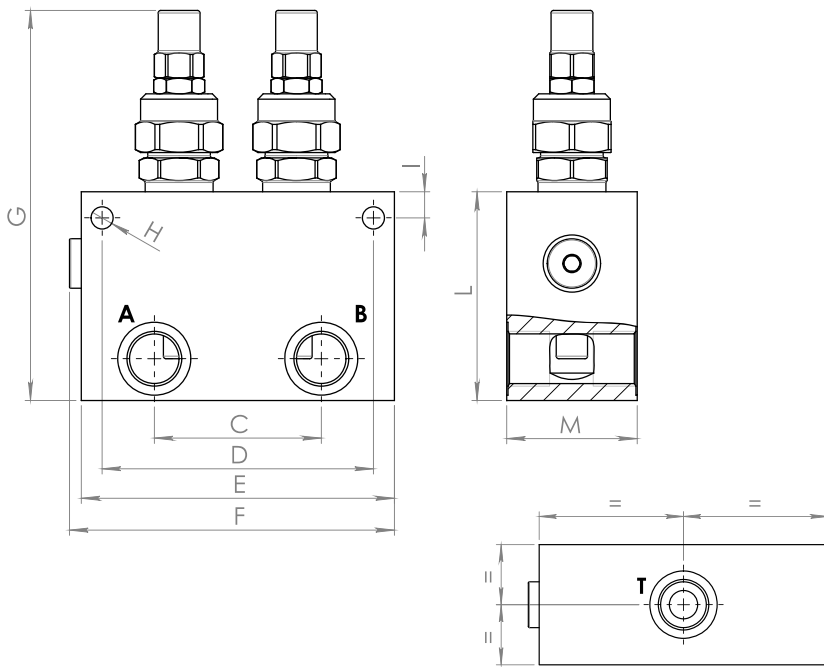
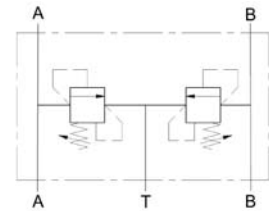


### Dimensions

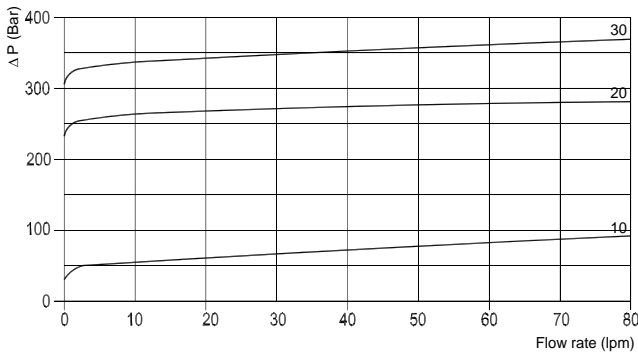


Size	A-B-T	C	D	E	F	G	H	I	L	M	Weight kg
03	1/2	64	104	120	124,5	149,5	8,5	10	80	50	1,78

### Hydraulic Symbol



### Curves



### Features

Rated Flow	80 lpm
Max Pressure	260 bar

**Materials:** Zinc plated steel cartridge, hardened steel inner parts.  
Aluminium manifold.

### Ordering Code

**DPRSU 80**

--

--

-

Port Size BSP		Spring (bar)	
03	1/2	10	5-50
		20	30-260
		30	130-350

### Adjustments

A		Socket Screw
C		Tamperproof Cap

**Ordering Code Example:** DPRSU800320A = 1/2 Port Size - 30-260 bar setting range, Socket screw adjustment.