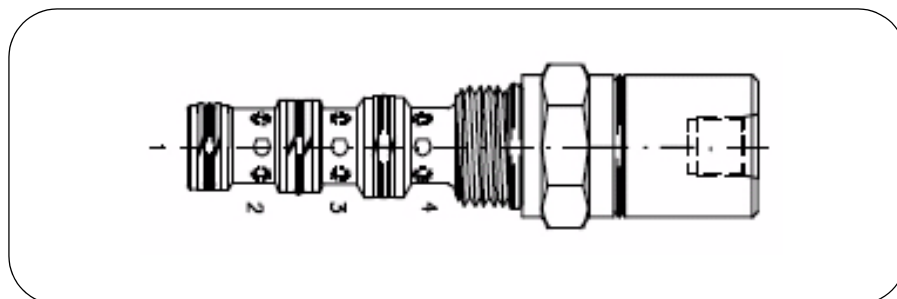


AIR/OIL PILOT DIRECTIONAL CONTROL VALVE

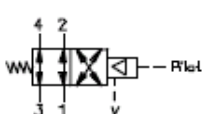
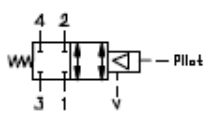
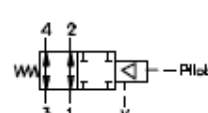
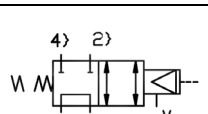


AODV

PILOT OPERATING PRESSURE RANGE:

FOR AIR = 3.4 TO 17.2 bar

FOR OIL = 3.4 TO 207 bar

Circuit	Air Pilot - Directional Control Valves		
	Part Number	Nom. Flow L/min	Cavity
	AODV-10-N-4A-0-4T	30	1040
	AODV-12-N-4A-0-4T	60	1240
	AODV-10-N-4B-0-4T	30	1040
	AODV-12-N-4B-0-4T	60	1240
	AODV-10-N-4C-0-4T	30	1040
	AODV-12-N-4C-0-4T	60	1240
	AODV-10-N-4D-0-4T	30	1040
	AODV-12-N-4D-0-4T	60	1240

Use the cavity size to select the correct body type then choose the desired port size.