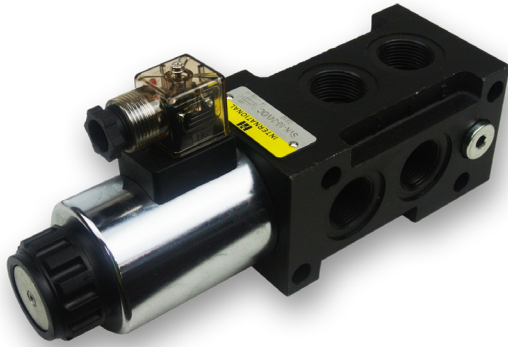


SELECTOR VALVES



MODEL	SVK
MAX OPERATING PRESSURE	250 bar
MAX FLOW RATE	80 lpm
WORKING PORTS	3/4" BSPP
DRAIN PORT	1/4" BSPP
VALVE BODY (material surface treatment)	Casting phosphating surface
OIL CLEANLINESS	NAS1638 class 9 & ISO4406 class 20/18/15

The Selector Valve receives an electrical signal to release, stop or redirect the fluid that flows through it. The external drain must be used when exceeding 150 bar.

Model	-	Size	-	Voltage
SVK	-	10	-	
				12VDC
				24VDC

